

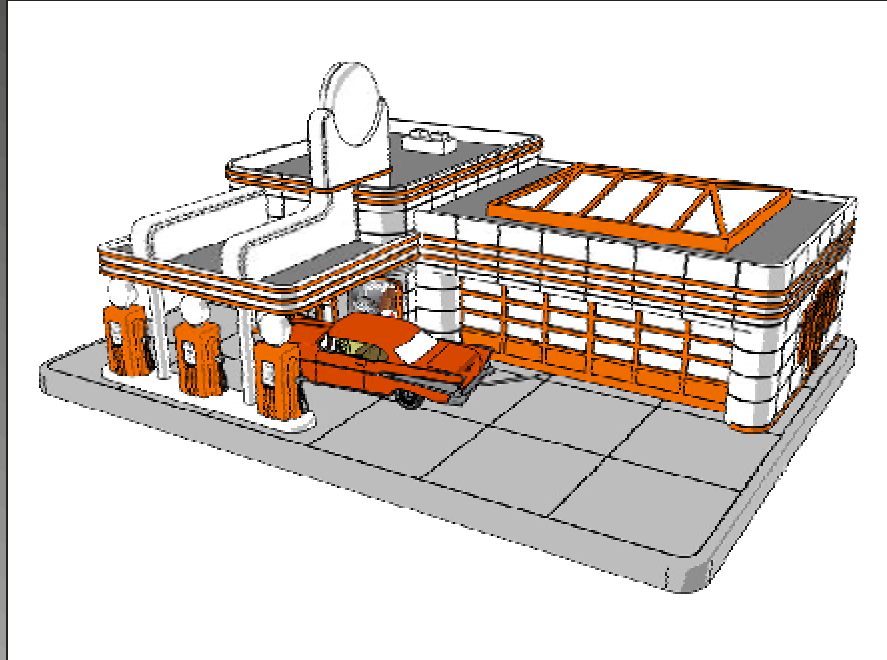


M.T.H.

ELECTRIC TRAINS.

7020 Columbia Gateway Drive
Columbia, MD 21046-1532

www.mth-railking.com



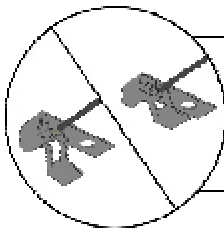
The RailKing® Operating Gas Station adds a touch of period authenticity to any O Gauge layout. Constructed from sturdy ABS plastic and painted in a familiar and authentic scheme, the gas station is sure to please anyone who likes to see action on a layout.

The gas station is pre-assembled, so setup is quick and easy. Just follow the directions and diagrams inside.

Operating Gas Station

WIRING INSTRUCTIONS

The RailKing® Gas Station is made up of three components: the gas station building and base, the car, and the activation button. Before you place the gas station on the layout, you must wire it to the activation button and transformer. In order to connect power to each component, the six (6) enclosed wires must be connected to the wiring posts located on the underside of the gas station and the activation button. Wires from ports A-C control the car operation. Wires from ports D-E control the lights. Follow the diagram shown to make the correct connections.



Strip Z-wire cable harness insulation to reveal 1/4" of bare wire.

- A)** Connect Red wire to transformer AC and connect Black wire to activation button
- B)** Connect Black wire to transformer ground
- C)** Connect Black wire to activation button
- D)** Connect Red wire to transformer AC
- E)** Connect Black wire to transformer ground

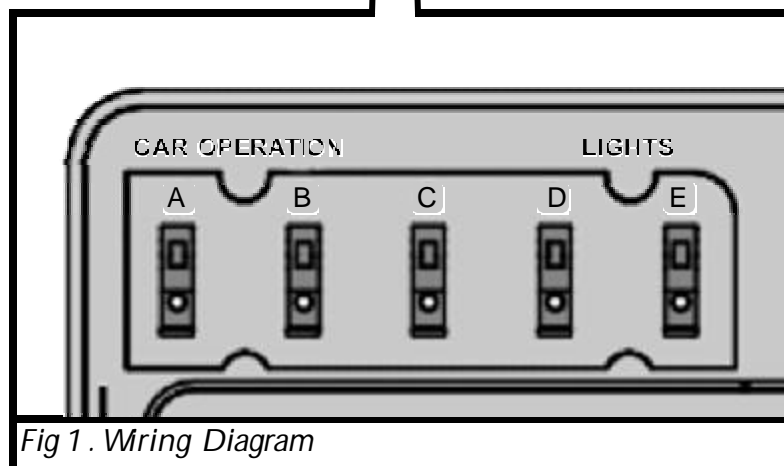
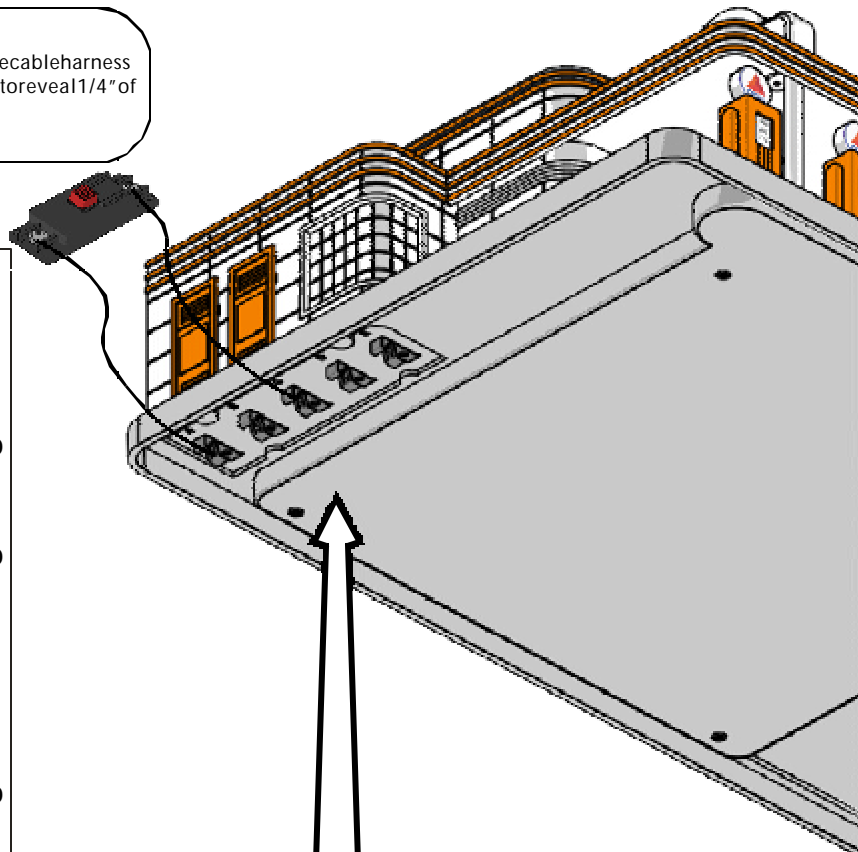


Fig 1 . Wiring Diagram

Final Touches: : To protect part of the rooftop sign from breaking during transit, the sign is packaged separately, in a small plastic bag. To complete set up, pop the circular part of the sign into the hole designed for it on the sign base.

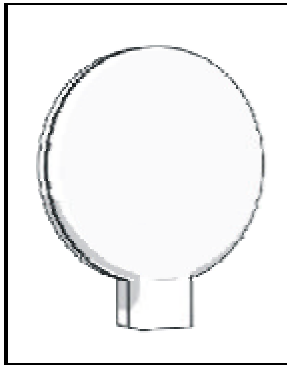


Fig2 . Circular part of the rooftop sign that is packaged separately

Operating Instructions: Once the gas station is wired to receive a 14-20 volt minimum power supply from the transformer and the transformer is turned on, simply press the activation button to start the gas station sequence.

In order to get the car into the gas station service bay, you must press the activation button to begin the cycle. Once the small tab that will carry the car along its track has exited the gas station and come to a stop, place the car onto the tab. When you play the return sequence, the car will be taken into the garage.

In the beginning sequence, the garage door will open, and you will hear the sound of the car engine starting. The car will roll from the garage to the pumps, which will trigger the service bell to ring. Once the car has come to a stop at the gas pumps, the sound of the pump filling the car will play for approximately five seconds. After the pump sounds stop, the car will remain at the pumps until the operator pushes the activation button.

When you push the activation button a second time, the car engine will start up and the car will back into the service bay. Once the car has come to a stop, the engine sounds will shut down and the bay door will close.

You can stop the motion at any time by turning off the power or by pressing the transformer's direction button. Once the power is restored, the car will return to its starting position within the bay without sound effects.

Replacing the Light Bulbs: There are several easy-to-change lightbulbs located in the gas station. Follow the instructions below to change them.

Sign Light: Pop the circular part of the sign off to access the bulb. To replace the bulb, simply pull it out and push a new one in, like Christmas tree lights (See Fig. 4).

Pump Lights: Pop the gas pump off the base to access the bulb. To replace the bulb, pull it out and push a new one in, like the sign light (See Fig. 4).

For the building and garage bulbs, you must first access the interior of the housing as follows:

- Remove the car from the gas station.
- Turn the building and base upside down, propping it carefully. Remove the four (4) screws from the base cover then lift the base cover off (See Fig. 3).
- Remove the ten (10) screws located on the bottom of the base. There is no need to remove the gear. Note that the two screws that hold the pumps in place are longer than the others and be sure to replace them in the correct location when reassembling (See Fig. 3).
- Carefully turn the gas station back over and tilt the housing away from the base. The wiring will remain connected.
- Replace the light bulbs as described below:

Building Lights: Twist the bulbs counter-clockwise then pull to remove them. Push in and twist clockwise to replace the bulb (See Fig. 4).

Garage Light: Pull the bulb out and push the new one in to replace it (See Fig. 4).

Reassemble the gas station in the reverse order given above.

You can obtain replacement bulbs directly from the M.T.H. Parts Department (phone: 410-381-2580; e-mail: parts@mth-railking.com; mail: 7020 Columbia Gateway Drive, Columbia MD 21046-1532).

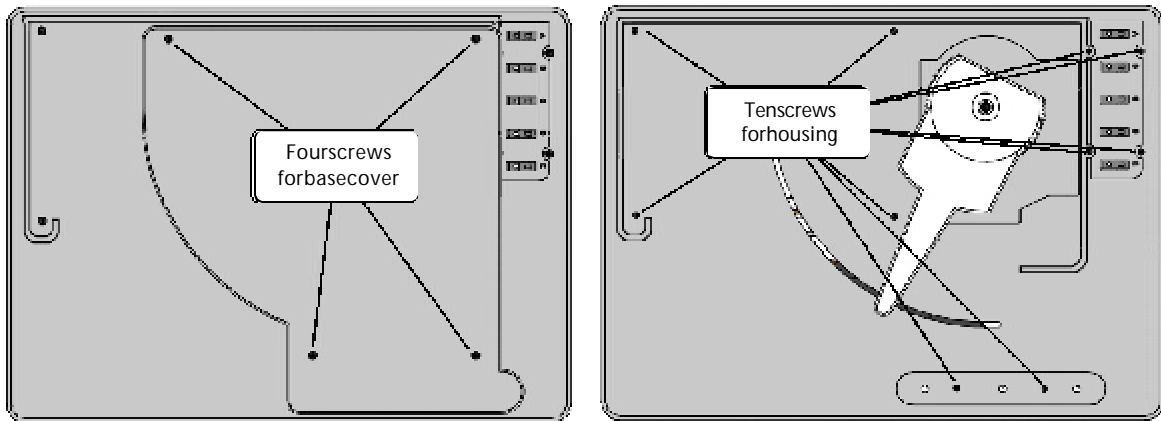


Fig 3. Removing the two sets of four and ten screws to reveal the inside of the building

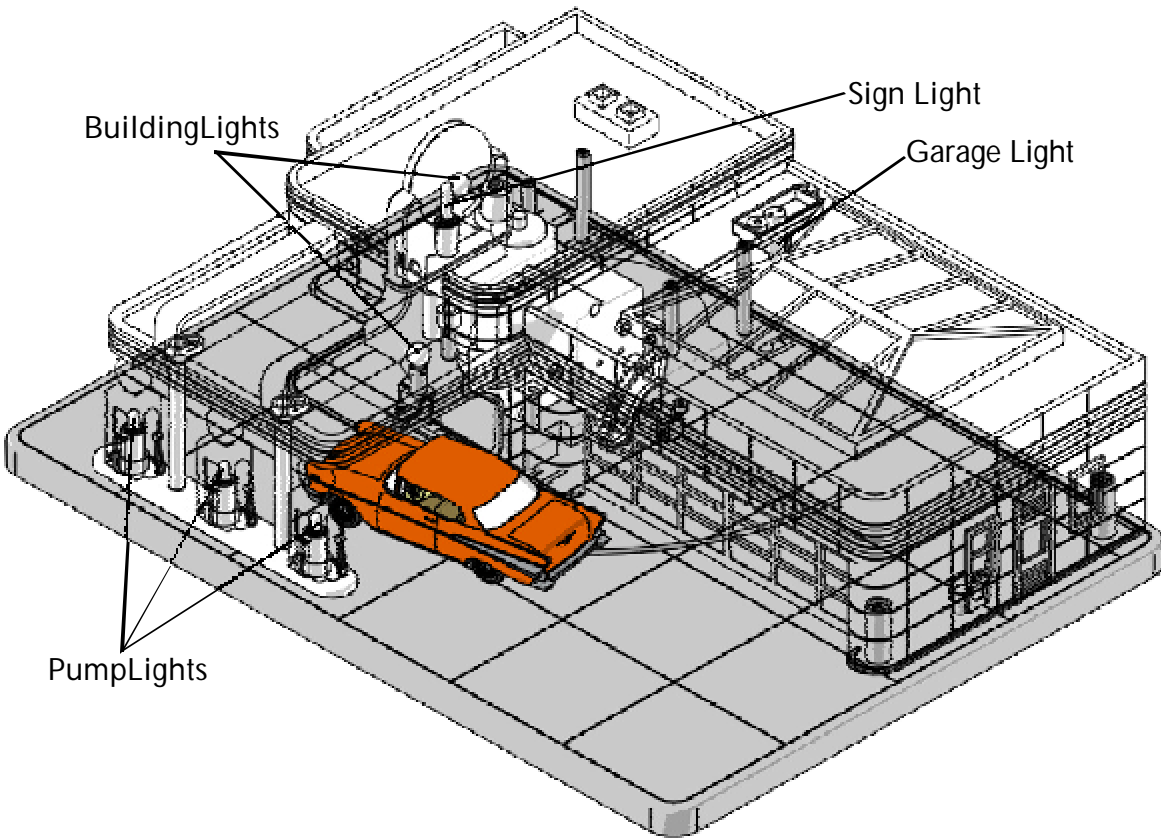


Fig 4 . Locations of the interior bulbs of the Gas Station

CAUTION: ELECTRICALLY OPERATED PRODUCT:

Not recommended for children under 8 years of age without adult supervision. As with all electric products, precautions should be observed during handling and use to reduce the risk of electric shock.

WARNING: When using electrical products, basic safety precautions should be followed including the following:

- Read this manual thoroughly before using this device.
- M.T.H. recommends that all users and persons supervising use examine the unit periodically for conditions that may result in the risk of fire, electric shock, or injury to persons, such as damage to the primary cord, plug blades, housing, output jacks or other parts. In the event such a condition exists, the unit should not be used until properly repaired.
- This unit is intended for indoor use. Do not use if water is present. Serious injury or fatality may result.
- Do not operate with damaged wires or clips.
- Do not use this unit for other than its intended purpose. This unit was designed to operate with any AC or DC output toy train transformer. See the transformer's operating instructions for more operating and safety information.

How to Get Service Under the Terms of the Limited One-Year Warranty

For warranty repair, do not return your product to the place of purchase. Instead, follow the instructions below to obtain warranty service, as our dealer network is not prepared to service the product under the terms of this warranty.

1. First, write, call or FAX M.T.H. Electric Trains, 7020 Columbia Gateway Drive, Columbia, MD 21046, (Tel: 410-381-2580; FAX: 410-423-0009; e-mail: service@mth-railking.com), stating when it was purchased and what seems to be the problem. You will be given a return authorization number to assure that your merchandise will be properly handled upon its receipt.
2. CAUTION: Make sure the product is packed in its original factory packaging including its foam and plastic wrapping material so as to prevent damage to the merchandise. The shipment must be prepaid and we recommend that it be insured. ***A cover letter including your name, address, daytime phone number, e-mail address (if available), Return Authorization number, a copy of your sales receipt and a full description of the problem must be included to facilitate the repairs. Please include the description regardless of whether you discussed the problem with one of our service technicians when contacting M.T.H. for your Return Authorization number.***
3. Please make sure you have followed the instructions carefully before returning any merchandise for service.

Limited One-Year Warranty

All M.T.H. products purchased from an Authorized M.T.H. Train Merchant are covered by this warranty.

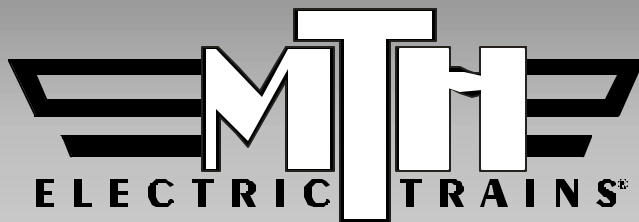
See our website at www.mth-railking.com or call 1-888-640-3700 to identify an Authorized M.T.H. Train Merchant near you.

M.T.H. products are warranted for one year from the date of purchase against defects in material or workmanship, excluding light bulbs and traction tires. We will repair or replace (at our option) the defective part without charge for the parts or labor, if the item is returned to M.T.H. Electric Trains within one year of the original date of purchase. This warranty does not cover damages caused by improper care, handling, or use. Transportation costs incurred by the customer are not covered under this warranty.

Items sent for repair must be accompanied by a return authorization number, a description of the problem, and the **original sales receipt from an Authorized M.T.H. Train Merchant**, which gives the date of purchase. Call 410-381-2580, fax 410-423-0009, or e-mail the Service Department at service@mth-railking.com to obtain a return authorization number.

This warranty gives you specific legal rights, and you may have other rights that vary from state to state.

Service Department
M.T.H. Electric Trains
7020 Columbia Gateway Drive
Columbia MD 21046-1532



AUTHORIZED SERVICE CENTER

7020 Columbia Gateway Dr. - Columbia, MD 21046

Information: 410-381-2580 Fax: 410-381-6122

www.mth-railking.com

PARTICIPATING RETAILER LIST OCTOBER 2001

ALABAMA
SOUTHERLAND
STATION
HUNTSVILLE
256-533-4720
railway@bellsouth.net

ARIZONA
ARIZONATRAIN
DEPOT
MESA
480-833-9486
sales@arizonatraindep
ot.com
www.arizonatraindepot.
com/

CALIFORNIA
DOLLHOUSES,
TRAINS&MORE
NOVATO
415-883-0388
kbecker@cmc.net

TINPLATE JUNCTION
OAKLAND
510-444-4780
TOYTRAINS@email.m
sn.com

COLORADO
MIZELLTRAINSInc
WESTMINSTER
303-429-4811
mizelltrains@cs.com
www.mizelltrains.com

CONNECTICUT
SHELTONRAILROAD
SYSTEMS
SHELTON
203-924-8761
adriani@clearlight.com

NEWENGLAND
HOBBYSUPPLY
MANCHESTER
860-646-0610
bobbell@nehobby.com

DELAWARE
KRRBMODEL
TRAINS INC.
NEWARK
302-292-2779
info@krrb.com
www.krrb.com

FLORIDA
DEPOT HOBBYSHOP
LAKEWORTH
561-585-1982
jimmyt1982@aol.com
www.depothobbies.co
m

COLONIALPHOTO&
HOBBY
ORLANDO
407-841-1485
trains@colonialphotoa
ndhobby.com

WARRICKCUSTOM
HOBBIES
PLANTATION
954-370-0708
info@warrickcustomho
bbies.com
www.warrickcustomho
bbies.com

FRANK'STRAINS&
HOBBIESINC.
OLDSMAR
813-855-1041
FTH@allhobbies.com
www.allhobbies.com

READY TOROLL
MIAMI
305-688-8868
rttrains@aol.com
www.readytorolltrains.c
om

ILLINOIS
BIKE& CHOOCHOO
CONNECTION
SCHAUMBURG
847-882-7728
trainconnection@aol.c
om

INDIANA
Y.O.R.K.TRAINS
MUNSTER
219-838-9999
yorktrains@aol.com

SAMUELSON'STRAIN
SHOP
VALPARAISO
219-462-2708

LOUISIANA
AMERICA'STRAIN
YARD
BATON ROUGE
225-926-5592

MAINE
WHEELS,WINGS&
THINGS
LUDLOW
207-532-6277
irc44@javanet.com

MARYLAND
ENGINEHOUSE
HOBBIES
GAITHERSBURG
301-590-0816
luciecerise@aol.com

J & B TRAINS
HAGERSTOWN
240-420-4930

HOBBYTOWNUSA
FREDERICK
301-694-7395

PURKEY'STOY
TRAINS
SYKESVILLE
410-549-6061
wiley@oldmainline.co
m

THE TRAINROOM
HAGERSTOWN
301-745-6681

MASSACHUSETTS
NORTHEASTTRAINS
PEABODY
978-532-1615
www.netrains.com

MICHIGAN
BRASSEUR
ELECTRICTRAINS
INC.
SAGINAW
517-793-4753
bob@traindoctor.com
www.traindoctor.com

MISSOURI
SWITCHSTAND
SAINT LOUIS
314-781-4458
r41877@earthlink.com

MARKTWAINHOBBY
CENTER
ST.CHARLES
636-946-2816
webmaster@hobby1.com
www.hobby1.com

NEWHAMPSHIRE
TREASUREDTOYS
SALEM
603-898-7224
ttoys@treasured-
toys.com
www.treasured-
toys.com

RAILROAD
SPECIALTIES
HUDSON
603-882-5566
crew@electric-
trains.com
www.electric-
trains.com

NEWJERSEY
TRAINS&THINGS
TRENTON
609-883-8790
trainsanthings@aol.com

GRANDCENTRAL
STATION
KEARNY
201-955-6200
228gene@gateway.com

HOBBYMASTERS,
INC
REDBANK
732-842-6020
hobbymasters@hobby-
masters.com

HOLLYBEACHTRAIN
DEPOT
WILDWOOD
609-522-2379
larry@pro-usa.net

COASTTRAINSAND
COLLECTIBLES
WALL
732-556-9005
coasttrain@aol.com
www.coasttrains.com

J&BTRAINS,INC.
MAPLESHADE
856-414-0092
BASE1130@aol.com

HOBBYSHOP
MATAWAN
732-583-0505
hobbyshopnj.com

ATLANTICRAILS
HAMMONTON
609-567-8490
bobcap@pics.com
www.atlanticrails.com

COUNTRYAND
STUFF
ANDOVER
973-786-7086
stuff@crystal.palace.net

RIDGEFIELDHOBBY
RIDGEFIELD
201-943-2636

COLUMBUS TRAIN
STATION
COLUMBUS
609-518-1800

NEWYORK
AURORARAILS&
HOBBIES
EASTAURORA
716-652-5718
rk82141@aol.com

AMERICANASTORE
TIVOLI
845-757-4246
mthdepot@valstar.net

NASSAUHOBBY
CENTER,INC.
FREEPORT
516-378-9594
Charlienassau@aol.com

KROSS HARDWARE
WESTBABYLON
631-669-3069
t989@aol.com

CITYDEPOT,INC.
NEWHAMPTON
845-374-3010
citydepot@frontiernet.net
www.citydepot.com

NORTHCAROLINA
DRYBRIDGE
STATION
MOUNTAIRY
336-786-9811
mikek@drybridgestation.com
www.drybridgestation.com

THE FREIGHTYARD
SMITHFIELD
919-934-6229
disbisette@aol.com

TRAINSLTD.
CHARLOTTE
704-566-9070
modelrrs@bellsouth.net
www.trainltd.com

THE ROUNDHOUSE
&BACKSHOP
CARY
919-465-0810

OHIO
DIXIEUNION
STATION
MASON
513-459-0460
rockylane@core.net
www.dixieunionstation.com

RICK'STOYTRAINS
TOLEDO
419-478-0171

T&KHOBBIYSHOP
BRIDGEPORT
740-633-6607
salea@tkhobbies.com
www.tkhobbies.com

TRAINS-N-THINGS
CANTON
330-499-1666
trains@sssnet.com

PARMAHOBBY
CLEVELAND
216-741-6440
info@parmahobby.com

GLEN'STRAINSHOP
AKRON
330-253-6527

E & S TRAINS
AKRON
330-745-0785

GRAND PACIFIC
JUNCTION
OLMSTEADFALLS
440-235-4777
gpjmrr@juno.com

HUDSONTOY,TRAIN
& HOBBY
HUDSON
330-653-2997
ejpickens@aol.com

DAVISELECTRONICS
MILFORD
513-831-6425
davistrains@fuse.net
www.davistrains.com

SANDY'SHOBBY'S&
COLLECTIBLES
ELYRIA
440-365-9999
sandyshobb@aol.com

ERIERAILWAY
DEPOT
TROY
937-440-9972
orville@gte.net

CLEARVIEWTRAIN&
HOBBY
LORAIN
440-277-4488
klogar@erienet.net
www.clearviewtrainand-
hobby.com

PENNSYLVANIA
FAIRCHANCE
PHARMACY
FAIRCHANCE
724-564-7817
mthdealer@aol.com
www.hhs.net/fairchance

THESTATION
NEWCUMBERLAND
717-774-7096
station@paonline.com

BUSSINGERTRAINS
AMBLER
215-628-2366
choochoos@icdc.com
www.icdc.com/~btrains

CHARLEROI
SWEEPERCENTER
CHARLEROI
724-483-3397

AMERICANHOBBY
CENTER
ALIQUIPPA
724-378-3930
american@icubed.com

CRANBERRYHOBBY
DEPOT
CRANBERRYTWP
724-776-3640
JAdams6113@aol.com

ALLENTOWNTOWN
TRAINSERVICE
ALLENTOWN
610-821-0740

ON THERIGHT
TRACK
ALTOONA
814-942-4345

JIM'S TRAINSHOP
HOMERCITY
724-479-2026
sudsy@stargate.net

YE OLDE TRAIN &
CHRISTMASSHOPPE
BOYERTOWN
610-369-0755
www.yeoldetrain.com

TOBY TYLER'S
HOBBYCENTER
PITTSBURGH
412-653-5030
tobytyler111@cs.com

BUSTLE ON TRAIN
SHOP
PHILADELPHIA
215-698-7266

CHESTNUT TOYBOX
PHILADELPHIA
215-545-0455
chestnuttoy@earthlink.net

THE CABOOSE
LEHIGHTON
570-386-5352
www.thecaboosehobbies.com
victen@ptd.net

SOUTH CAROLINA
EMERALD TRAIN &
HOBBY
GREENWOOD
864-223-2247

TENNESSEE
MODEL RAILROAD &
HOBBYSHOP
MEMPHIS
901-384-6500
mrhs99@earthlink.net
www.modelrailroadandhobby.com

TEXAS
HOBBYTIME
AMARILLO
806.352.9660
don.l.harris.@hobbytime.com

VIRGINIA
TRAINDEPOT
MANASSAS
703-335-2216

NORGE STATION
WILLIAMSBURG
757-564-7623
norgetrains@cs.com

NUTBUSHEXPRESS
VICTORIA
804-696-1902
thenutbushexp@meck.com.net

TOY TRAIN CENTER
RICHMOND
804-288-4475

T S G HOBBIES
WARRENTON
540-347-9212
tripi@mnsinc.com
www.mnsinc.com/tripi/tsg.htm

CHESTERFIELD
HOBBIES
MIDLOTHIAN
804-379-9091
chsthobb@erols.com
www.chesterfieldhobbies.com

DAVISHOBBY
SUPPLIES
PORTSMOUTH
757-397-1983
ralph@davishobby.com
www.davishobby.com

LOCUST GROVE
TRAINS
LOCUST GROVE
540-854-8955
lgtrains@aol.com
www.locustgrovetrains.com

WEST VIRGINIA
PATRICK'S TRAINS
WHEELING
304-232-0714
trains@patstrains.com
www.patstrains.com

WISCONSIN
SOMMERFELD'S
TRAINS
BUTLER
262-783-7797
questions@sommerfelds.com
www.sommerfelds.com

GB TV & TRAINS
GREENBAY
920-496-9697
rrtycoon@netnet.net

GRAMPA'S TRAIN
SHOP
RICE LAKE
715-234-2996
grampastrains@ya.hoo.com

THE TRAIN STORE
WAUKESHA
262-650-6675

HOBBY OUTLET
FOND DULAC
920-924-3770
hobby_outlet@hotmail.com

CANADA
ONTARIO

CREDIT VALLEY
RAILWAY COMPANY
STREETSVILLE
905-826-1306
CVRCO@globalserve.net
www.cvrco.com

TOY TRAIN
WORKSHOP
CUMBERLAND
613-833-3125
info@toytrainworkshop.com
www.toytrainworkshop.com

THE TRAIN ROOM
FERGUS
519-787-3280